



Secure, pharmaceutical-style packaging protects posts from debris & contamination.

MACRO-LOCK POST™ ILLUSION™

A pioneer in endodontic rehabilitation

Established in 1968 by Dr. Marc Reynaud, RTD developed and commercialised the fibre post and is the worldwide leader in this field. RTD is certified ISO 9001 / ISO 13485, employs engineers, technicians and chemists, and is also protected by numerous patents.

From our facilities in the “high-tech corridor” of Grenoble, France, over 95% of RTD’s production is exported to over 70 countries, and enjoys market leadership in most of those countries.

RTD posts have been independently tested and described in the dental literature over 75 times, and are used and taught in dental schools on every continent.

Patents :
EP 1 115 349 & EP 0 432 001
US 5 328 372 & US 5 890 904
Patents pending:
EP 0 529 2190.5



For a first use
Intro kit with 20 posts + drills

For refills
Blister pack of
10 posts of same size



Not 4580GB rev. 06/07 - 2007

Photos : H. Martin



Translucent quartz fiber

MACRO RETENTIVE FIBER POST

Permanent retention, color as needed

- RADIOPAQUE
- RELIABLE
- AESTHETIC
- EASY TO USE

22°C

37°C



Process



3 rue Louis Neel Technoparc Espace Gavanière
38 120 ST EGREVE - FRANCE
Tél.: + 33 (0)4 76 56 56 66 Fax: + 33 (0)4 76 56 11 77
E-mail: rtd@rtd.fr / www.rtd.fr

Distributor



MACRO-LOCK POST

- Flexural strength : 1600 MPa
- Interlaminar shearing strength : 65 MPa
- Elastic modulus (30°) : 13 GPa



A caring, complete control of the process:



1. Fabrication process



2. Analysis degree of conversion



3. Flexural strength test



4. Shear Strength test



5. Computer driven grinding



6. Tolerance scanning



7. Fatigue Testing



8. User-friendly package design

from the manufacturing of the raw material to the final grinding of the post.

RTD is the originator of the fibre reinforced endodontic post. Over nearly 40 years' time, we have developed and adapted innovative materials, equipment and techniques for design, production, processing and testing of the products.

RTD is highly automated and uses computer-driven technology to maintain full in-house control over raw materials, degree of polymerisation, mechanical properties and dimensional tolerances- to name a few- on ALL our posts.

All of this helps provide RTD, our distributors, dentist customers and patients a great peace of mind, and expectations of long-term clinical success.

A well-tested material

Macro-Lock is made from the same material as our D.T. Light-Post®, which has won the prestigious REALITY'S CHOICE award three years in a row.

No clinical root fractures due to an elastic modulus close to dentin

Cannot corrode, like stainless steel can

Color coded for easy identification posts match the drills.

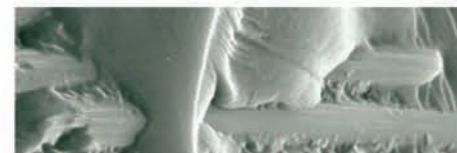
NEW Color disappears when seated, re-appears in cas of removal

High translucency provides aesthetics and light transmission

Radio opaque for easy diagnostic

Removable in minutes

Successful biological, in-vitro and clinical behaviour reported world-wide



A sophisticated design

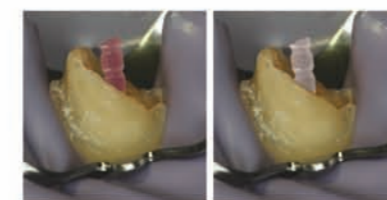
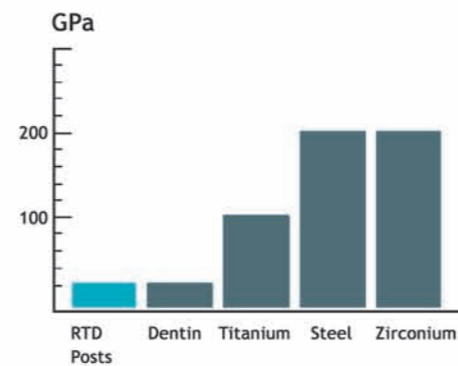
Macro serrations and anti-rotation features interlock with the core to increase retention

Passive macro serrations maximize the connection to the resin cement

Tapered shape enhances adaptation to the root anatomy & conserves dentin

4 colour-coded sizes satisfy anatomical & clinical demands without compromise

Low Elastic Modulus (Angle=30°)



CLINICAL CASE

Courtesy of Dr Duret



Isolate, remove gutta Create post space Try-in



Trim excess length Etch post space Rinse. Remove water



Apply adhesive. Cure Apply adhesive. Cure Place dual cure resin

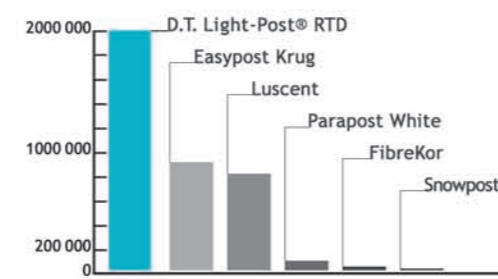


Seat post Light cure Load core material



Place core matrix Light-cure Trim the core build-up

Cyclic fatigue test



Grandini S., Goracci C., Monticelli F., Borracchini A., Ferrari M. An evaluation, using a three-point bending test, of fatigue resistance of certain fiber posts. Il Dentista Moderno, March, 2004, 70-74

Ø 1,35 1,45 1,65 1,85



Ø 0,8 0,8 1 1

22°C

37°C

