



MATCHPOST™



Translucent glass fiber

ALL THESE POPULAR FEATURES

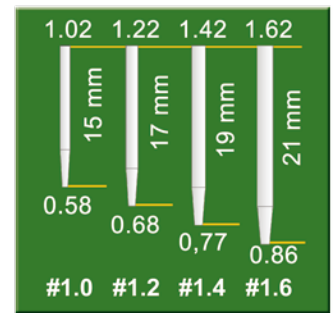
The best value for your money!

- 
- TAPERED TO CONSERVE DENTINE
 - RADIOPAQUE
 - FOUR SIZES. TO FIT EVERY TOOTH
 - TRANSLUCENT
 - STRONG
 - DURABLE

- Bonded into place for excellent retention of core / crown assembly.
- Translucent, to conduct light curing polymerization energy.
- Radiopaque (2,00mm Al (ISO 4049))
- Elastic Modulus similar to that of dentin, to prevent root fractures.
- Micro-retentive surface, for high bond strength.
- High strength, for clinical durability.
- Biocompatible and cannot corrode.
- Aesthetic.



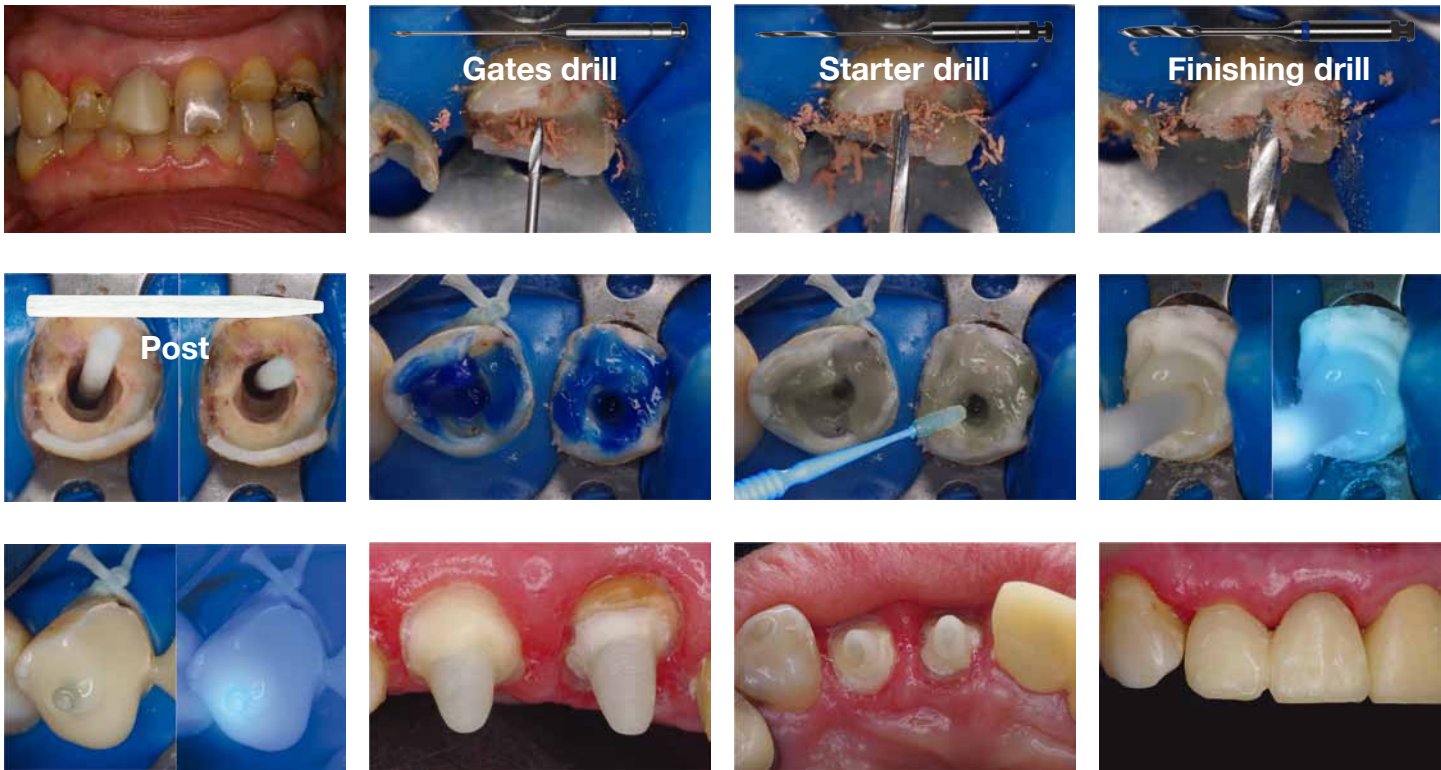
MATCHPOST Radiopacity
(Courtesy Dr. B. Duret)



COMPOSITION:

Glass fiber: >60%
Epoxy resin matrix: <40%

Clinical case (Courtesy Dr Bertoldi)



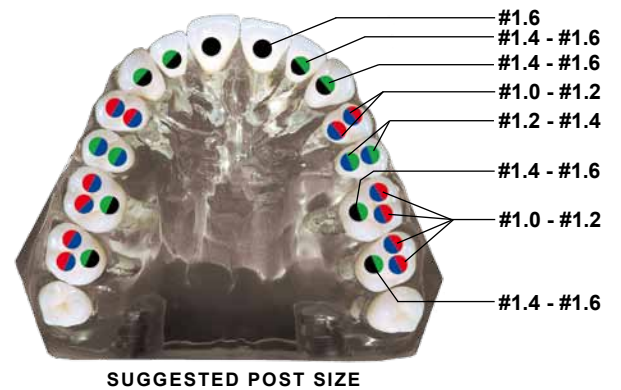
4800001 12 Posts Ø 1.0 - 1.2
+ Drills



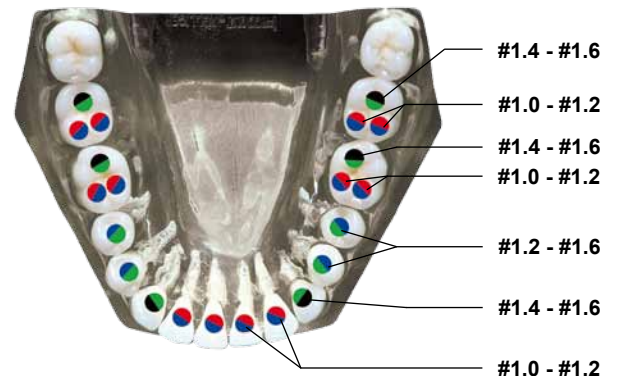
4820210 1 Drill Ø 1.0



4810010
10 MATCHPOST Ø 1.0



SUGGESTED POST SIZE



3 rue Louis Neel Technoparc Espace Gavanière
38 120 ST EGREVE - FRANCE
Tél.: + 33 (0)4 76 56 56 66 Fax: + 33 (0)4 76 56 11 77
E-mail: rtd@rtd.fr / www.rtd.fr

